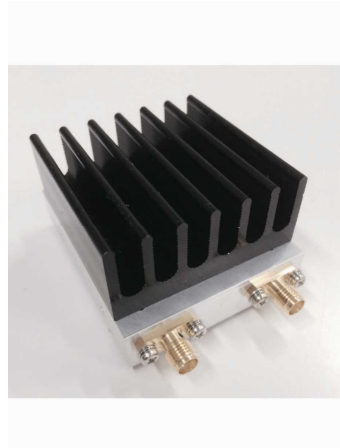


Programmable Frequency Synthesizer

DPL-4.2GF



DPL-4.2GFH



Features

- Low Phase Noise
- Programmable
- 1Hz Step
- Wide band 50MHz~4200MHz
- +6V Single Power Supply
- Compact size



Digital Signal Technology, Inc.

2-9-10, Kitahara, Asaka, Saitama, 351-0036, Japan

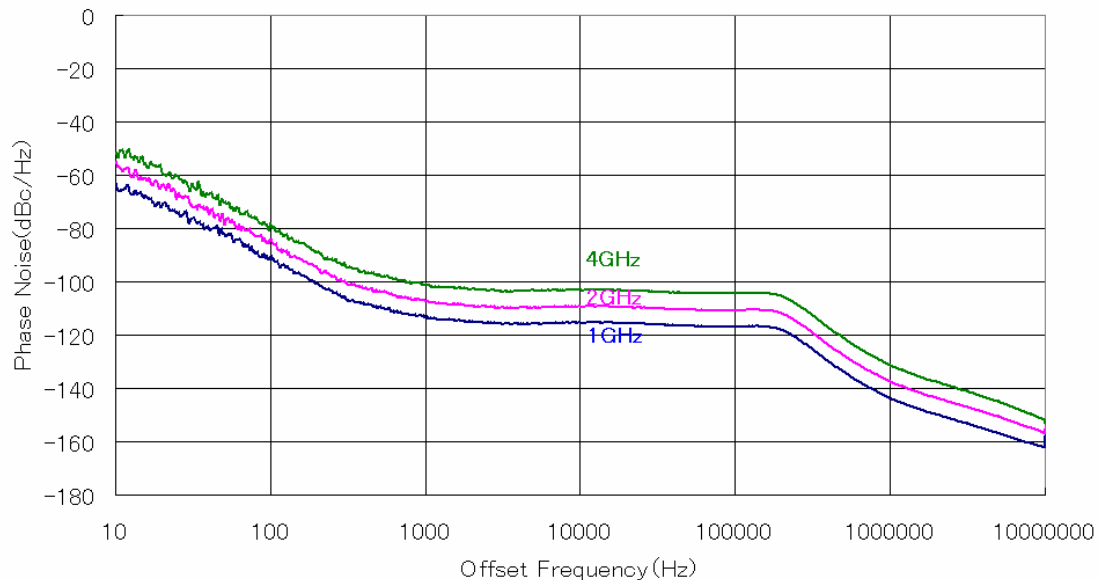
TEL : 81-48-470-7030 FAX : 81-48-470-7022

<http://www.dst.co.jp/en>

● Specification

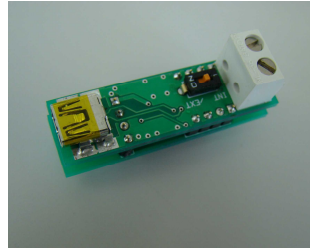
Power Supply/Current	+6V±5%、<700mA	
Frequency Range	50MHz – 4.2GHz	
Frequency Resolution	1Hz step	
Output Level	>+10dBm	
Output Impedance	50Ω	
Spurious	<-60dBc	
Harmonics	<-8dBc	
Phase Noise 4GHz (typical)	-80dBc/Hz	@100Hz
	-97dBc/Hz	@1kHz
	-102dBc/Hz	@10kHz
	-105dBc/Hz	@100kHz
	-126dBc/Hz	@1MHz
Internal Reference Clock Accuracy	<±2ppm 0 – 50 degree C	
External reference Clock and Level	10MHz -6dBm ~ +6dBm	
External Clock Input Impedance	High Impedance (>1KΩ)	
Lock Time	Max 5msec (1) SPI: from SPI_STRB rise edge to the detection of PLL_LD (2) SCI: from receipt of "CR" to the detection of PLL_LD	
Operating Temperature Range	0 – +50 degree C (In case of being installed with thermal resistance 5.0 degree C/W Heat sink.)	
Outer dimensions	50mm x 60mm x 12.5mm 50mm x 60mm x 33.5mm (with Heat Sink)	
Interface	(1) Asynchronous Serial Communication	9600bps, 8bit, 1stop bit, Non Parity 3.3V CMOS level
	(2) SPI Serial Communication 3 bytes data	3.3V CMOS level

● Phase Noise

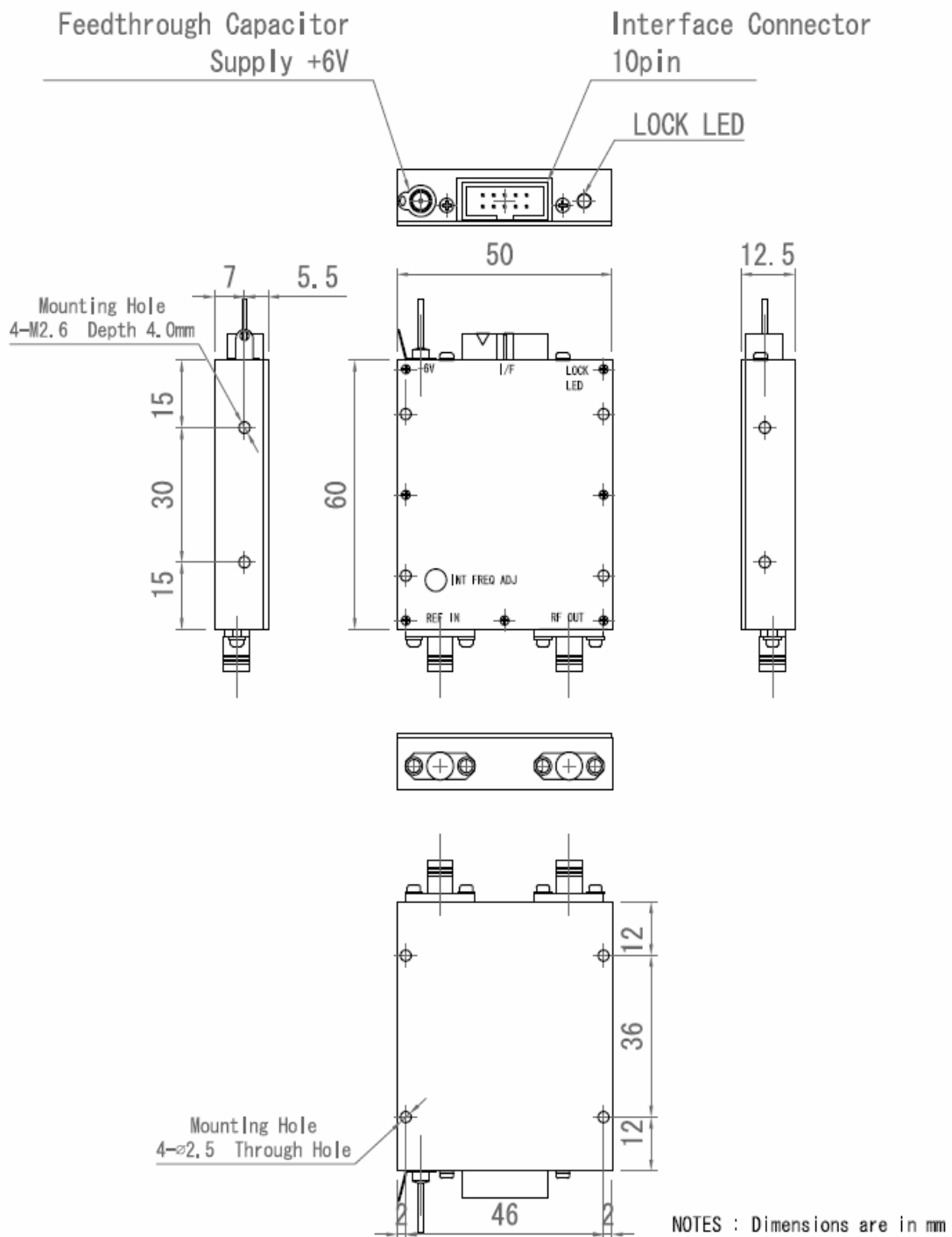


● Option

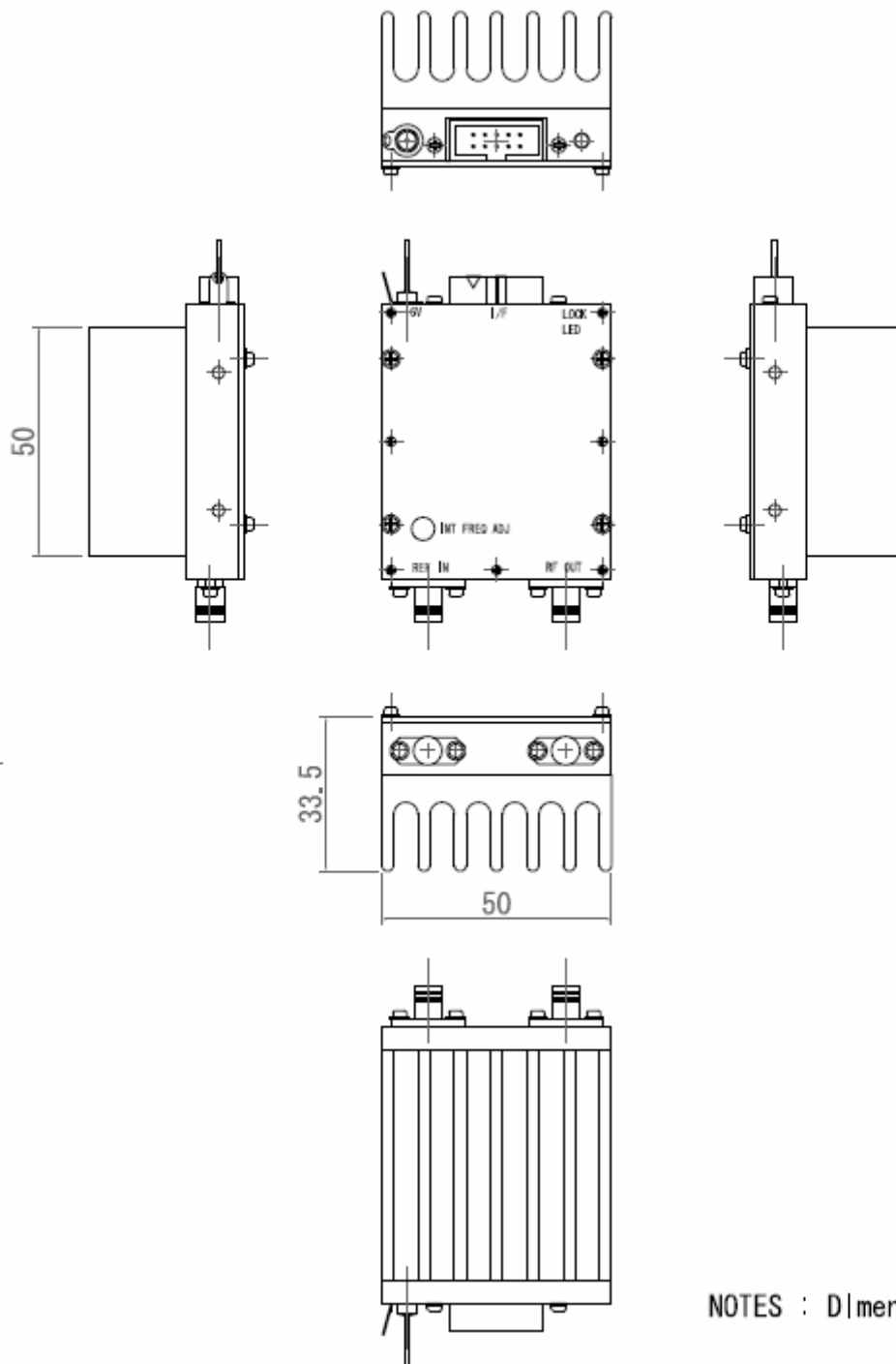
USB Interface **USBIF-01**



● Outer dimensions for DPL-4.2GF



Outer Dimensions for DPL-6GFH



NOTES : Dimensions are in mm